

FOR SALE: COLLINS FARM BUCKLEY

Legal Description:

Pt of Sect 23, 26 & 34
T25N, R10E of 3rd P.M.

154.86 Acres
\$7,500/Ac - \$1,161,450
South of Buckley
Iroquois County, IL

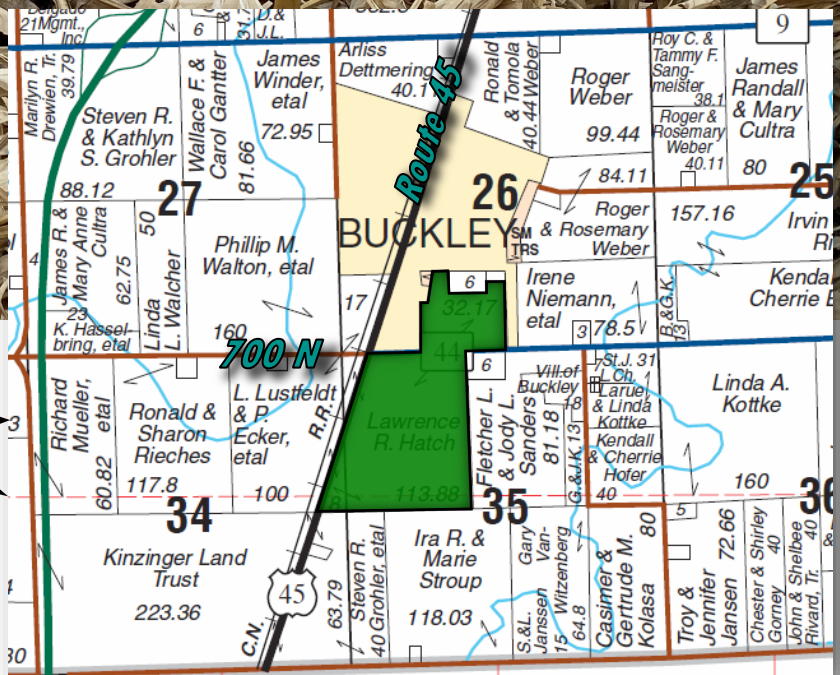
**well
tiled!**

USDA/FSA Info.:

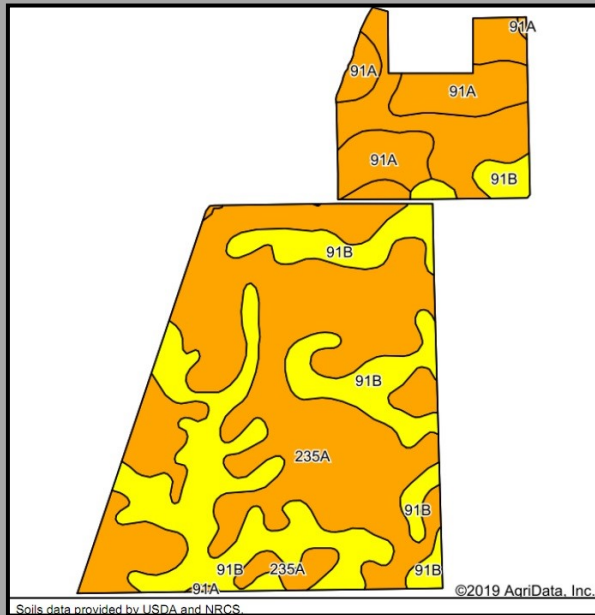
Farm: 25
Tillable Acres: 151.72
Corn Base: 84.7Ac
PLC Yield: 151
ARC-PLC
Soybean Base: 67.0 Ac
PLC Yield: 53
ARC-CO
Wetlands: Determination
not complete

**strong
fertility!**

Soil Test			
Test date	pH	P	K
10-2020	6.6	50	510



Soil Map and Aerial Photo



Code	Soil Description	Acres	% of Field	Legend	Corn Bu/A	Soybeans Bu/A	Opt Mgt PI
235A	Bryce silty clay, 0 to 2 percent slopes	91.38	60.2%		162	54	121
91B	Swygert silty clay loam, 2 to 4 percent slopes	46.66	30.8%		156	51	117
91A	Swygert silty clay loam, 0 to 2 percent slopes	13.68	9.0%		158	52	118
Weighted Average:					159.8	52.9	119.5

RE Taxes

PIN	Acres	19 Tax Pd 20	Tax/Ac
29-26-379-017	32.17	\$763.90	\$23.75
29-34-200-003	8.81	\$226.58	\$25.72
29-35-100-002	113.88	\$2,826.26	\$24.82
Total	154.86	\$3,816.74	\$24.65

Contact: Waibel Farmland Services, Inc.
 107 S. Lincoln
 P.O. Box 1188
 Mahomet, IL 61853

www.WaibelFarmlandServices.com
brian@WaibelFarmlandServices.com
seth@WaibelFarmlandServices.com
 Office: 217-590-0233

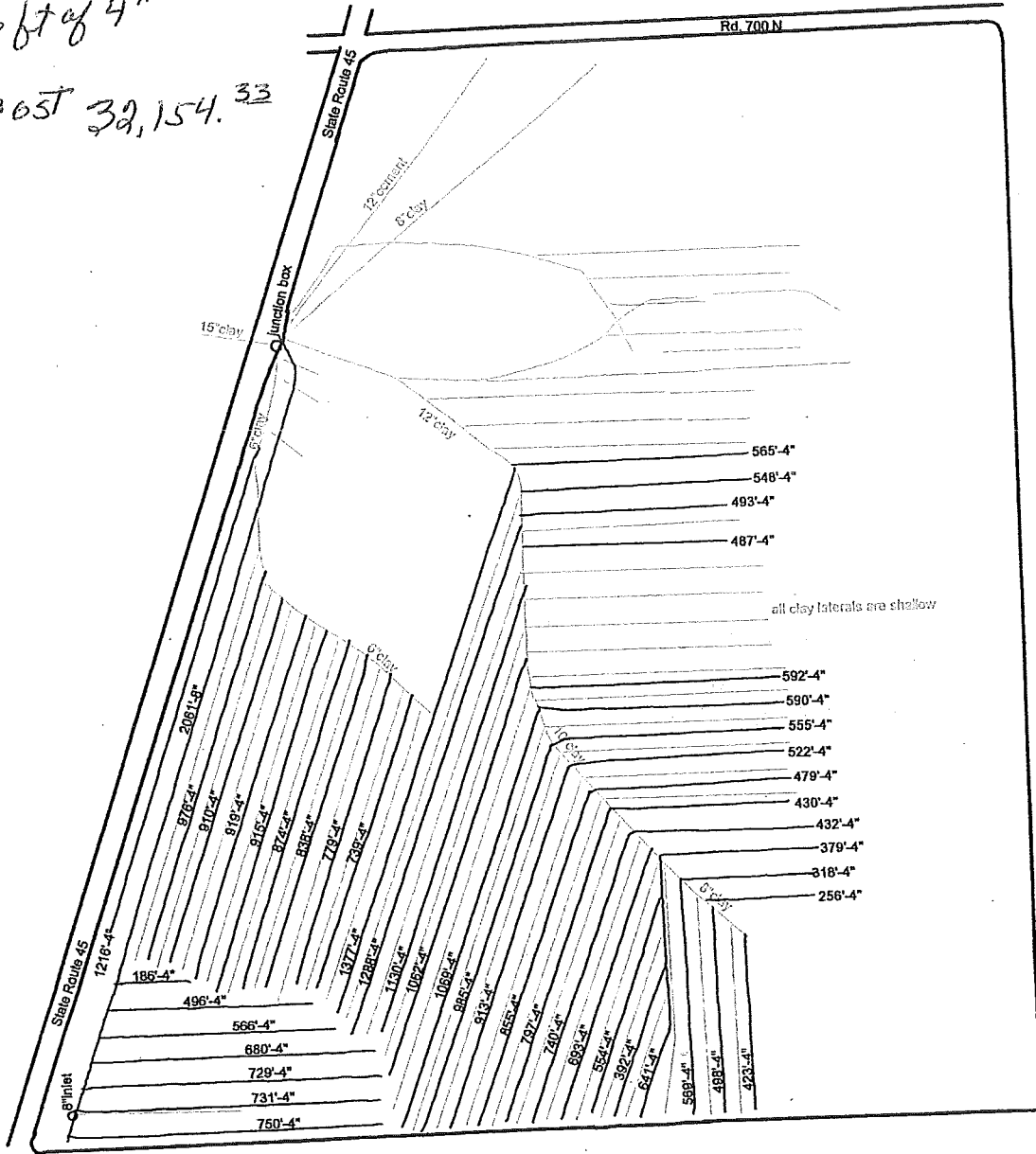
Possession: Full possession available for 2021 crop year.

Agency: Waibel Farmland Services Inc. is agent for the seller.

Disclaimer: Information in this brochure is believed to be accurate, but is subject to verification by buyers or others relying on it. No liability for errors or omissions is assumed by the seller or their agents.

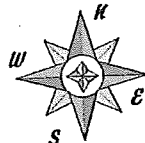
Louie Chandler - Hatch Farm
 N.W. Part Sec. 35 Artesia W. Twp
 6-7-2012

2061 ft of 8"
 32 936 ft of 4"
 TOTAL COST 32,154.³³



Projection : Universal Transverse Mercator
 Datum : WGS Datum (1984)
 Zone Number : 16
 Hemisphere : North

Scale 1 : 5223
 1000 ft



Henrichs Drainage II LLC
 Paxton IL.

Bo 815-383-2855
 Ben 815-383-9500
 Andy 217-202-4064

