



# FOR SALE: COLLINS FARM CARLYLE LAKE

## Legal Description:

N 1/2 of SE 1/4 of Section 10,  
T3N, R2W of the 3rd P.M. in  
Clinton County, IL

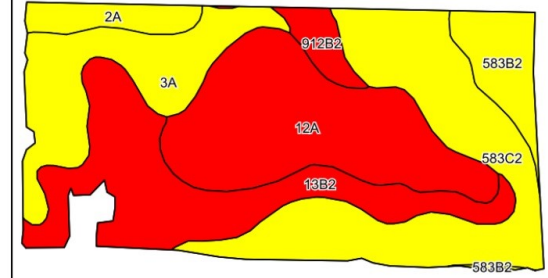
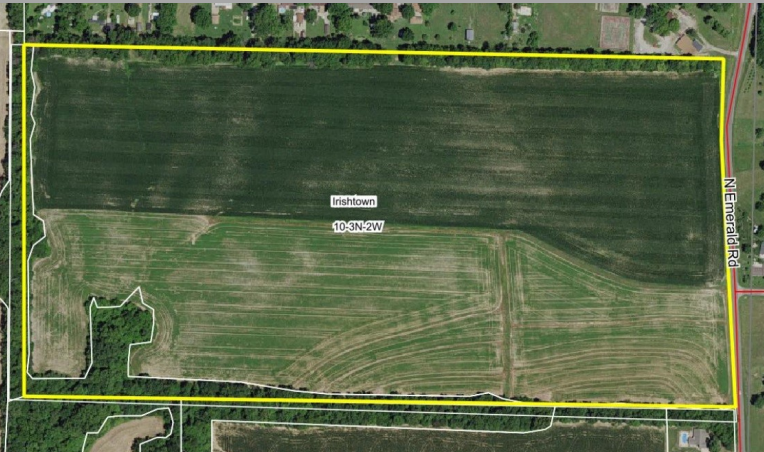
**78.56 Acres**  
**\$7,950/Ac - \$624,552**  
**2.0 mi. SW of Keyesport**  
**Clinton County, IL**

## USDA/FSA Info.:

Farm: 6383  
Tillable Acres: 72.22  
Corn Base: 27.35 Ac  
PLC Yield: 126  
ARC-CO  
Soybean Base: 48.31 Ac  
PLC Yield: 36  
ARC-CO  
Wheat Base: 20.94 Ac  
PLC Yield: 65  
ARC-CO  
Wetlands: Determinations  
not complete.



# Soil Map and Aerial Photo



Soils data provided by USDA and NRCS.

©2019 AgriData, Inc.

Area Symbol: IL027, Soil Area Version: 13

Code	Soil Description	Acres	Percent of field	Il. State Productivity Index Legend	Corn Bu/A	Soybeans Bu/A	Crop productivity index for optimum management
**583C2	Pike silt loam, 5 to 10 percent slopes, eroded	18.60	25.7%	Yellow	**150	**46	**108
12A	Wynoose silt loam, 0 to 2 percent slopes	18.26	25.3%	Red	128	42	97
**13B2	Bluford silt loam, 2 to 5 percent slopes, eroded	15.69	21.7%	Red	**129	**42	**96
3A	Hoyleton silt loam, 0 to 2 percent slopes	10.69	14.8%	Yellow	146	46	108
**583B2	Pike silt loam, 2 to 5 percent slopes, eroded	4.33	6.0%	Yellow	**153	**47	**110
2A	Cisne silt loam, 0 to 2 percent slopes	2.74	3.8%	Yellow	149	46	109
**912B2	Hoyleton-Darmstadt silt loams, 2 to 5 percent slopes, eroded	1.93	2.7%	Red	**125	**42	**96
<b>Weighted Average</b>					<b>138.8</b>	<b>44.1</b>	<b>102.5</b>

## RE Taxes

PIN	Acres	18 Tax Pd 19	Tax/Ac
03-03-10-400-007	78.56	\$611.60	\$7.79

## Soil Tests

Test date	pH	P	K
3-2017	5.9	103	287

**Contact: Waibel Farmland Services, Inc.**  
 107 S. Lincoln  
 P.O. Box 1188  
 Mahomet, IL 61853

[www.WaibelFarmlandServices.com](http://www.WaibelFarmlandServices.com)  
[brian@WaibelFarmlandServices.com](mailto:brian@WaibelFarmlandServices.com)  
[seth@WaibelFarmlandServices.com](mailto:seth@WaibelFarmlandServices.com)  
 Office: 217-590-0233

**Possession:** Full possession available for 2020 crop year.

**Agency:** Waibel Farmland Services Inc. is agent for the seller.

**Disclaimer:** Information in this brochure is believed to be accurate, but is subject to verification by buyers or others relying on it. No liability for errors or omissions is assumed by the seller or their agents.