



FOR SALE: DIGHTON FARM

Legal Description:

W 1/2 of the SW 1/4 of Sect 13,
and the SE 1/4 of Sect 14, lying S
of RR, T19N, R6 E of Third P.M.

227.92 Acres
\$10,800/Ac - \$2,461,536
1.5 mi. NE of
White Heath, IL
Piatt County, IL

**NEW
PRICE**

USDA/FSA Info.:

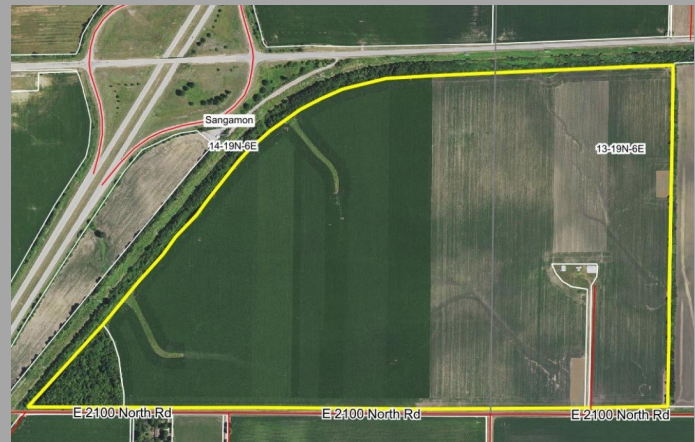
Farm: 1017
Tillable Acres: 210.14
Corn Base: 104.4 Ac
PLC Yield: 179
ARC-CO
Soybean Base: 104.07 Ac
PLC Yield: 53
ARC-CO
Wetlands: Prior converted
CRP Pollinator: 1.67 ac @
\$333.43/ac thru 9/2026

Soil Tests

Test date	pH	P	K
4/2015	6.3	100	369
VRT Limed 165 T Fall 15/16			

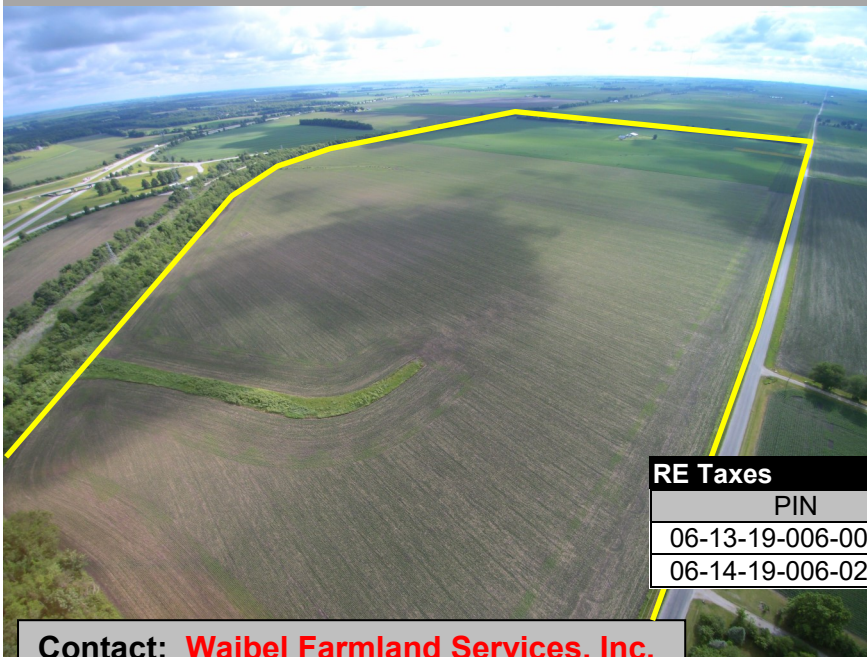


Soil Map and Aerial Photo



Area Symbol: IL147, Soil Area Version: 13

Code	Soil Description	Acres	Percent of field	Il. State Productivity Index Legend	Corn Bu/A	Soybeans Bu/A	Crop productivity index for optimum management
152A	Drummer silty clay loam, 0 to 2 percent slopes	126.02	60.0%		195	63	144
154A	Flanagan silt loam, 0 to 2 percent slopes	73.55	35.0%		194	63	144
67A	Harpster silty clay loam, 0 to 2 percent slopes	7.36	3.5%		182	57	133
**56B	Dana silt loam, 2 to 5 percent slopes	2.01	1.0%		**178	**55	**130
330A	Pectone silty clay loam, 0 to 2 percent slopes	1.24	0.6%		164	55	123
Weighted Average					193.8	62.7	143.4



Yield History (bu/ac)

Year	Corn	Beans
2018	251.7	84.9
2017	219.3	69.6
2016	230.5	65.7
2015	236.5	74.7
2014	238.1	63.5

RE Taxes

PIN	Acres	17 Tax Pay 18	Tax/Ac
06-13-19-006-005-00	82.47	\$3,202.68	\$38.83
06-14-19-006-022-00	145.45	\$5,426.92	\$37.31

Contact: Waibel Farmland Services, Inc.
 107 S. Lincoln
 P.O. Box 1188
 Mahomet, IL 61853

www.WaibelFarmlandServices.com
brian@WaibelFarmlandServices.com
 O: 217-590-0233 or C: 217-898-2757

Possession: Subject to crop share lease for 2018 crop year.
Agency: Waibel Farmland Services Inc. is agent for the seller.
Disclaimer: Information in this brochure is believed to be accurate, but is subject to verification by buyers or others relying on it. No liability for errors or omissions is assumed by the seller or their agents.