



For Sale: Ennis Trust Farm

160 Acres

\$7,850/Ac (\$1,256,000)

Location: 3 mi. SE of Rankin, IL

3.5 mi. SW of East Lynn

Legal Description:

**SW 1/4 of Section 28
T23N, R13W of 2nd P.M.
Vermilion County, IL**



Map reproduced with permission of Rockford Maps Publishers, Rockford, IL

USDA/FSA Info.:

Farm: 11127

Tillable Acres: 150.63 Ac

Corn Base: 82.2 Ac (prorated)

Direct Yield: 109 bu/Ac

CC Yield: 109 bu/Ac

Soybean Base: 68.3 Ac (prorated)

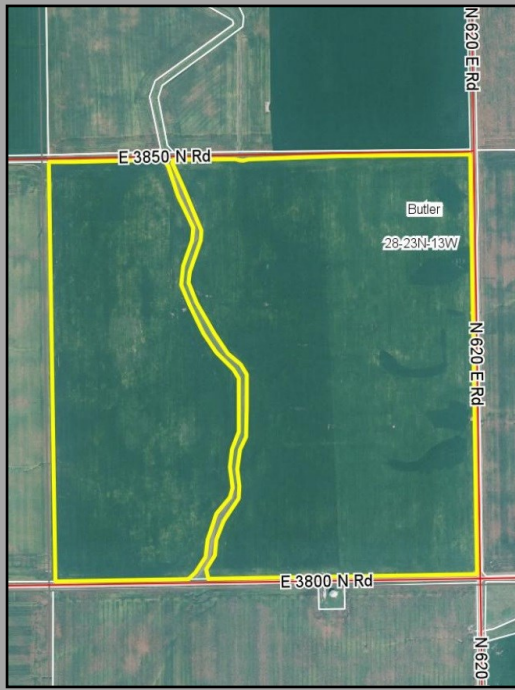
Direct Yield: 33 bu/Ac

CC Yield: 33 bu/Ac

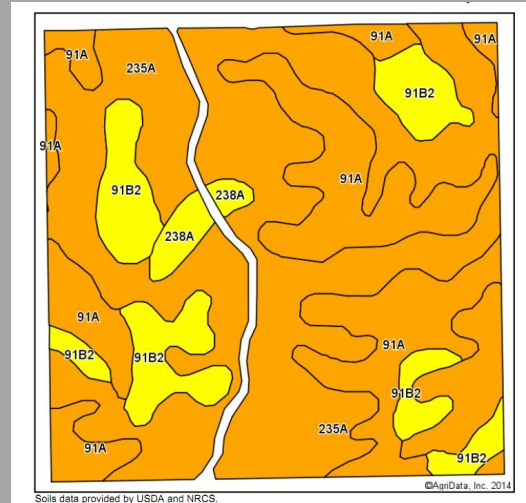
Soil Tests

Farm	Test date	pH	P	K	
North 160	April-12	6.1	40	367	VRT limed 211T Fall '12

Aerial Photo



Soil Map



Area Symbol: IL183, Soil Area Version: 9

Code	Soil Description	Acres	Percent of field	Ill. State Productivity Index Legend	Corn Bu/A	Soybeans Bu/A	Crop productivity index for optimum management
235A	Bryce silty clay, 0 to 2 percent slopes	85.27	56.6%		162	54	121
91A	Swygert silty clay loam, 0 to 2 percent slopes	40.95	27.2%		158	52	118
**91B2	Swygert silty clay loam, 2 to 4 percent slopes, eroded	21.25	14.1%		**147	**48	**110
238A	Rantoul silty clay, 0 to 2 percent slopes	3.16	2.1%		144	49	109
Weighted Average					158.4	52.5	118.4

Possession: Subject to lease for 2014 crop year. Tenants rights available for 2015.

Agency: Waibel Farmland Services Inc. is agent for the seller.

Disclaimer: Information in this brochure is believed to be accurate, but is subject to verification by buyers or others relying on it. No liability for errors or omissions is assumed by the seller or their agents.

Contact: Waibel Farmland Services, Inc.
 303 E. Main St. Unit C
 P.O. Box 1188
 Mahomet, IL 61853

Brian D. Waibel, Managing Broker
www.WaibelFarmlandServices.com
brian@WaibelFarmlandServices.com
 O: 217-590-0233 or C: 217-898-2757

RE Taxes

Farm	PIN	Acres	13 Tax Pd 14	Tax/Ac
North 160	02-28-300-001-0021	160	\$1,983.10	\$12.39/Ac

