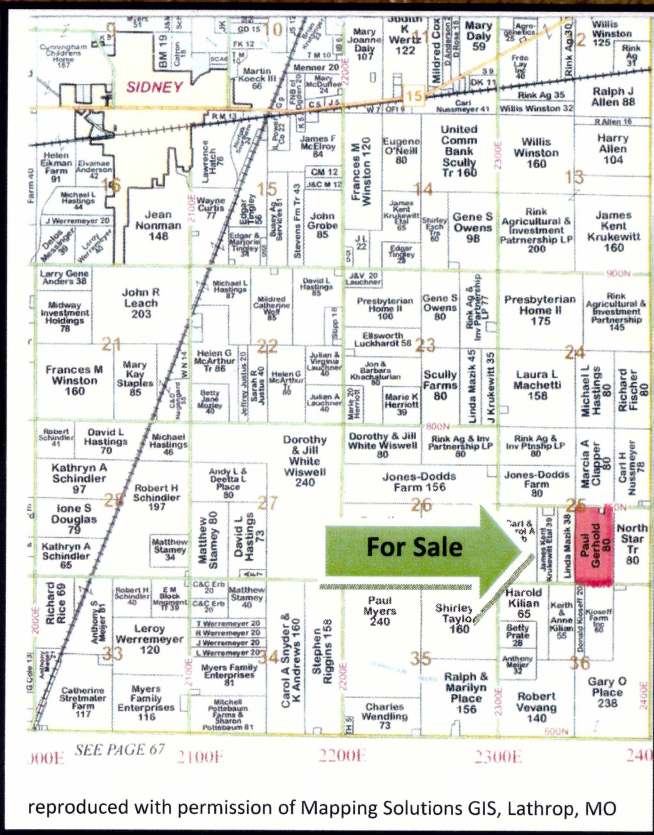


# For Sale: GERHOLD FARM

**Legal Description:**

W ½ SE ¼ Section 25,  
excl 2.0 Ac building site,  
T18N, R10E 3<sup>rd</sup> PM  
Champaign County, IL

78.0+/- Acres  
\$12,900/Acre  
Champaign County, IL  
Sidney Township  
Location: 3 mi. SE of Sidney



**Soil test averages (2012 test):**  
pH 6.1 \* P 53 \* K 290  
VRT applied 123 lime fall 2012 to 6.4 pH test

**Possession:** Tenants rights available for 2014 crop year.  
**Agency:** Waibel Farmland Services Inc. is agent for the seller.

**Disclaimer:** Information in this brochure is believed to be accurate, but is subject to verification by buyers or others relying on it. No liability for errors or omissions is assumed by the seller or their agents.

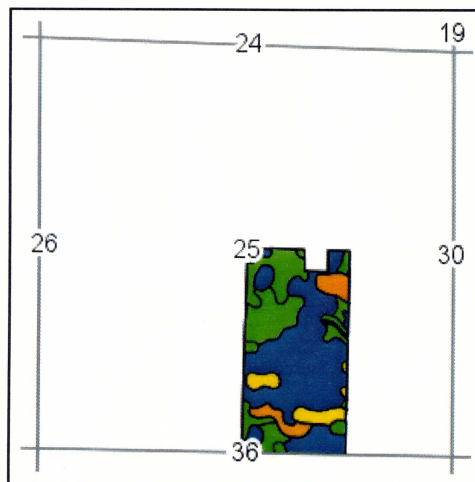
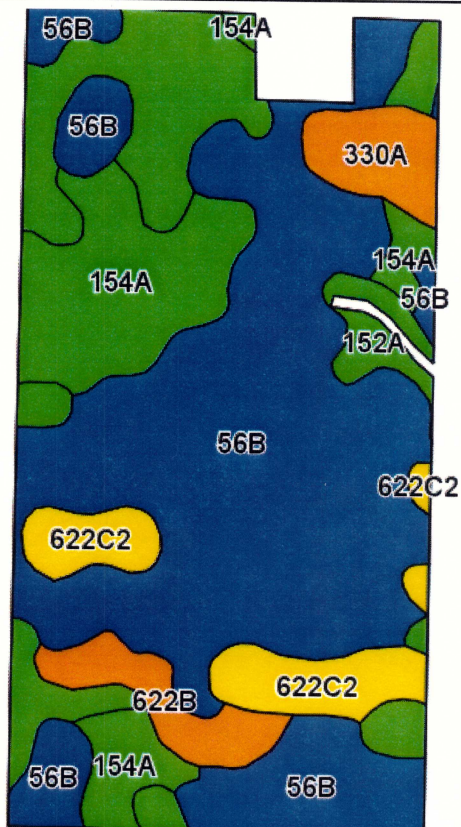
RE Taxes			
PIN	Acres	12 Tax Pd 13	Tax/Ac
24-28-25-400-002	78.0	\$1,602	\$20.54

PIN includes building site. Farmland taxes estimated based on proration of Farmland AV to Total AV.

Yield History		
Year	Corn	Soybeans
2012	--	53.4
2011	174.9	--
2010	--	62.5
2009	215.4	--
2008	--	62.2
2007	184.6	--



## Soils Map



State: **Illinois**  
 County: **Champaign**  
 Location: **25-18N-10E**  
 Township: **Sidney**  
 Acres: **77.40**  
 Date: **10/14/2013**



Maps provided by:



©AgriData, Inc 2013  
www.AgriDataInc.com

Field borders provided by Farm Service Agency as of 5/21/2008.  
Soils data provided by University of Illinois at Champaign-Urbana.

Code	Soil Description	Acres	Percent of field	Il. State Productivity Index Legend	Corn Bu/A	Soybeans Bu/A	Crop productivity index for optimum management
**56B	Dana silt loam, 2 to 5 percent slopes	42.15	54.5%		**178	**55	**130
152A	Drummer silty clay loam, 0 to 2 percent slopes	13.10	16.9%		195	63	144
154A	Flanagan silt loam, 0 to 2 percent slopes	11.04	14.3%		194	63	144
**622C2	Wyanet silt loam, 5 to 10 percent slopes, eroded	5.39	7.0%		**150	**49	**112
**622B	Wyanet silt loam, 2 to 5 percent slopes	2.92	3.8%		**159	**52	**119
330A	Peotone silty clay loam, 0 to 2 percent slopes	2.80	3.6%		164	55	123
<b>Weighted Average</b>					<b>180</b>	<b>57</b>	<b>132.4</b>

Table: Optimum Crop Productivity Ratings for Illinois Soil by K.R. Olson and J.M. Lang, Office of Research, ACES, University of Illinois at Champaign-Urbana. Version: 1/2/2012 Amended Table S2 B811 (Updated 1/10/2012)  
Crop yields and productivity indices for optimum management (B811) are maintained at the following NRES web site: <http://soilproductivity.nres.illinois.edu/>  
\*\* Indexes adjusted for slope and erosion according to Bulletin 811 Table S3

**Contact: Waibel Farmland Services, Inc.**  
 303 E. Main St. Unit C  
 P.O. Box 1188  
 Mahomet, IL 61853

[www.WaibelFarmlandServices.com](http://www.WaibelFarmlandServices.com)  
[brian@WaibelFarmlandServices.com](mailto:brian@WaibelFarmlandServices.com)  
 Office: 217-590-0233  
 Cell: 217-898-2757

# Aerial Map



Maps provided by:



©AgriData, Inc. 2012  
www.AgriDataInc.com

**25-18N-10E**  
**Champaign County**  
**Illinois**

map center: 39° 59' 19.08, 88° 1' 8.9  
scale: 10037



10/14/2013

Field borders provided by Farm Service Agency as of 5/21/2008. Aerial photography provided by Aerial Photography Field Office.