

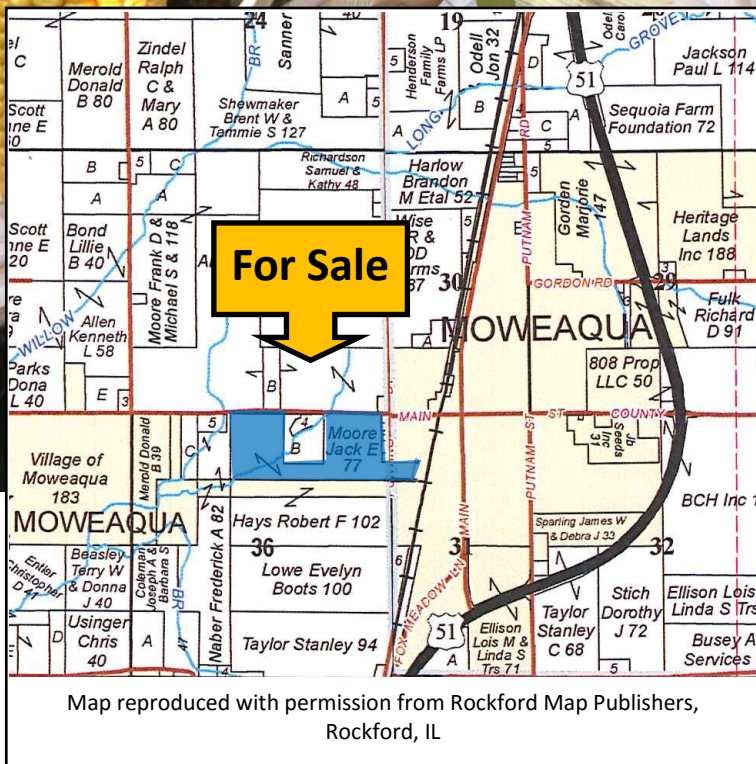


# FOR SALE: MOORE FARM

## Legal Description:

Pt of Sect 36, T14N, R1E,  
Pt of Sect 31, T14N, R2E ,  
of the 3rd P.M.  
Christian and Shelby Cty

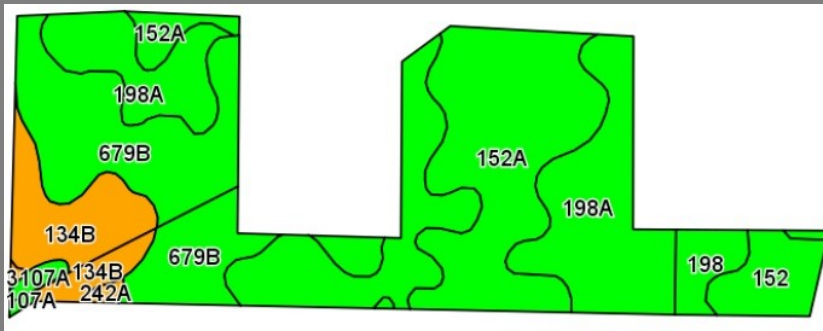
**82.27 Acres**  
**\$10,500/acre — \$863,835**  
(**\$9,817/FSA tillable acre**)  
**West edge of Moweaqua**  
**10 mi. south of Decatur, IL**



## USDA/FSA Info.:

Farm: 1346  
Tillable Acres: 87.99  
(107%)  
Corn Base: 46.37  
PLC Yield: 136  
ARC-CO  
Soybean Base: 38.63  
PLC Yield: 45  
ARC-CO

# Soil Map and Aerial Photo



**Possession:** Full possession available for 2017 crop year.  
**Agency:** Waibel Farmland Services Inc. is agent for the seller.  
**Disclaimer:** Information in this brochure is believed to be accurate, but is subject to verification by buyers or others relying on it. No liability for errors or omissions is assumed by the seller or their agents.

Area Symbol: IL021, Soil Area Version: 8  
 Area Symbol: IL173, Soil Area Version: 11

Code	Soil Description	Acres	Percent of field	Il. State Productivity Index Legend	Corn Bu/A	Soybeans Bu/A	Crop productivity index for optimum management
198A	Elburn silt loam, 0 to 2 percent slopes	29.84	33.9%		197	61	143
152A	Drummer silty clay loam, 0 to 2 percent slopes	21.68	24.6%		195	63	144
**679B	Blackberry silt loam, 2 to 5 percent slopes	20.28	23.0%		**192	**59	**141
**134B	Camden silt loam, 2 to 5 percent slopes	7.98	9.1%		**164	**50	**118
152	Drummer silty clay loam, 0 to 2 percent slopes	4.18	4.8%		195	63	144
198	Elburn silt loam, 0 to 2 percent slopes	2.72	3.1%		197	61	143
3107A	Sawmill silty clay loam, 0 to 2 percent slopes, frequently flooded	0.83	0.9%		189	60	139
242A	Kendall silt loam, 0 to 2 percent slopes	0.48	0.5%		172	53	125
<b>Weighted Average</b>					<b>192.1</b>	<b>60.1</b>	<b>140.4</b>

### Soil Tests

Farm	Test date	pH	P	K	
West 1/2 (41.1 Ac)	10-2015	5.8	51	277	Limed 2T/Ac 2013
East 1/2 (44.2 Ac)	Fall 2012	5.5	53	202	Limed 2T/Ac 2015

**Contact:**  
**Waibel Farmland Services, Inc.**  
 303 E. Main St. Unit C  
 P.O. Box 1188  
 Mahomet, IL 61853

[www.WaibelFarmlandServices.com](http://www.WaibelFarmlandServices.com)  
[brian@WaibelFarmlandServices.com](mailto:brian@WaibelFarmlandServices.com)  
 O: 217-590-0233 or C: 217-898-2757

### RE Taxes

PIN	Acres	15 Tax Pd 16	Tax/Ac
12-10-36-200-001-00	76.55	\$3,090.92	\$40.38
12-10-25-400-003-00	1.47	\$31.12	\$21.17
1001-31-07-207-001	1.11	\$56.88	\$51.24
1001-31-07-207-002	1.11	\$56.88	\$51.24
1001-31-07-208-001	1.09	\$55.84	\$51.23
1001-31-07-208-002	0.94	\$48.16	\$51.23
<b>Total</b>	<b>82.27</b>	<b>\$3,339.80</b>	<b>\$40.60</b>

