



For Sale: Personette Farm

Legal Description:

E 1/2 of SW 1/4, and W 340+/- ft of the W 1/2 of the SE 1/4 of Section 35 (excl. building site), Township 16 N, Range 6 E of the 3rd PM

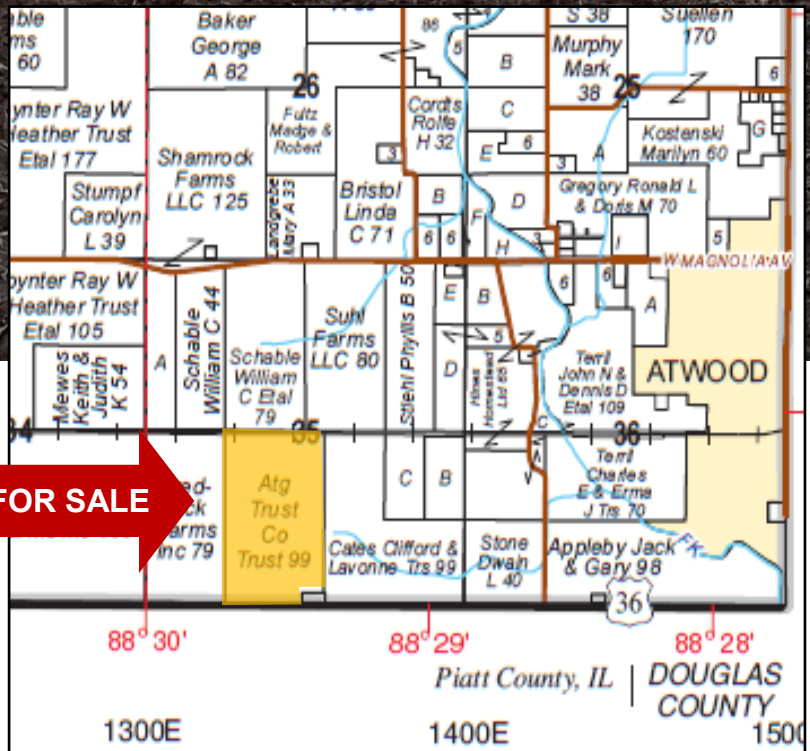
99.24 Acres
\$11,300/Ac - \$1,121,412
1 mi. West of
Atwood, IL
Piatt County, IL

USDA/FSA Info.:

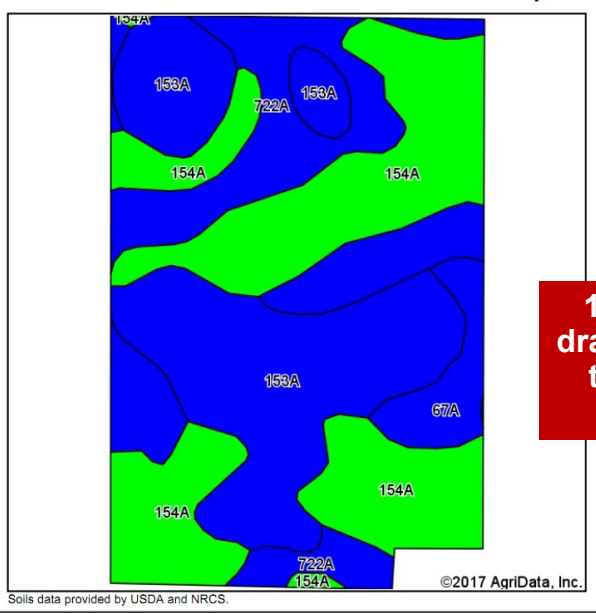
Farm: 4051
Tillable Acres: 99.32
Corn Base: 70.30 Ac
PLC Yield: 139
ARC-CO
Soybean Base: 29.00 Ac
PLC Yield: 43
ARC-CO
Wetlands: determination not complete

Soil Tests

Test date	pH	P	K
6/13/16	6.1	63	326



Soil Map and Aerial Photo



15" dual wall drainage district tile installed in 2011.

Area Symbol: IL147, Soil Area Version: 12

Code	Soil Description	Acres	Percent of field	Il. State Productivity Index Legend	Corn Bu/A	Soybeans Bu/A	Crop productivity index for optimum management
154A	Flanagan silt loam, 0 to 2 percent slopes	38.07	38.3%	Green	194	63	144
153A	Pella silty clay loam, 0 to 2 percent slopes	32.39	32.6%	Blue	183	60	136
722A	Drummer-Milford silty clay loams, 0 to 2 percent slopes	24.18	24.4%	Blue	184	60	137
67A	Harpster silty clay loam, 0 to 2 percent slopes	4.63	4.7%	Blue	182	57	133
Weighted Average					187.4	61	139.2

RE Taxes

PIN	Acres	15 Tax Pd 16	Tax/Ac
07-35-16-006-012-00	99.24	\$3,142.12	\$31.66

Yield History (bu/ac)

Year	Corn	Beans
2016		80+
2015	184.6	
2014		67.1

Contact: Waibel Farmland Services, Inc.
 303 E. Main St. Unit C
 P.O. Box 1188
 Mahomet, IL 61853

www.WaibelFarmlandServices.com
brian@WaibelFarmlandServices.com
 O: 217-590-0233 or C: 217-898-2757

Possession: Full possession available for 2017 crop year with reimbursement for expenses.

Agency: Waibel Farmland Services Inc. is agent for the seller.

Disclaimer: Information in this brochure is believed to be accurate, but is subject to verification by buyers or others relying on it. No liability for errors or omissions is assumed by the seller or their agents.