



For Sale: Raufeisen Farm

Legal Description:

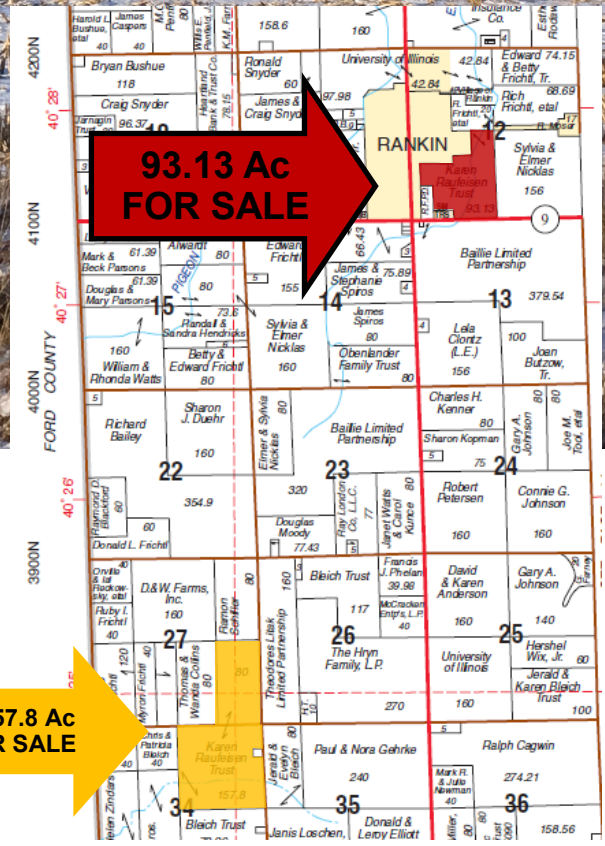
SW 1/4 of Section 12, T23N,
R14W of 2nd PM with excl.

93.13 Acres
\$5,800/Ac - \$540,154
SE edge of Rankin, IL
Vermilion County, IL

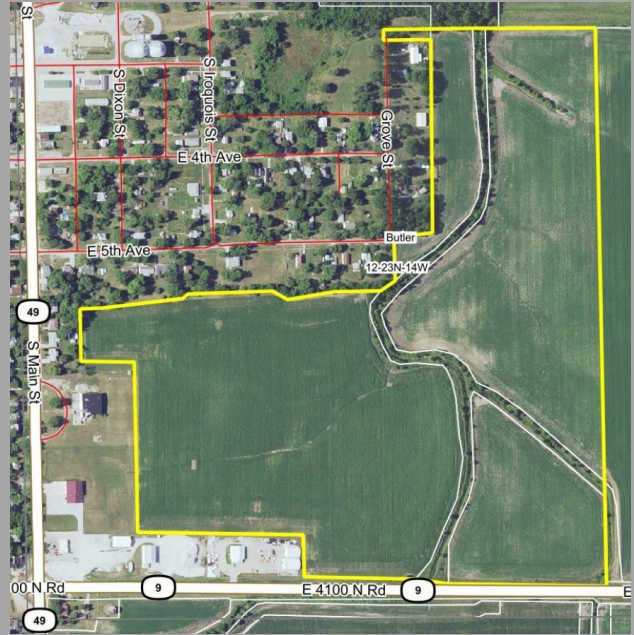
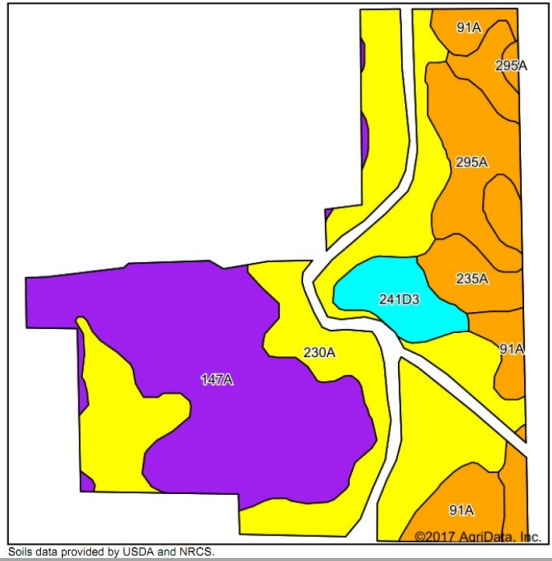


USDA/FSA Info.:

Farm: 115
Tillable Acres: 83.90
Corn Base: 46.70 Ac
PLC Yield: 116
ARC-CO
Soybean Base: 37.20 Ac
PLC Yield: 39
ARC-CO
Wetlands: yes (dr. ditch)



Soil Map and Aerial Photo



Area Symbol: IL183, Soil Area Version: 13

Code	Soil Description	Acres	Percent of field	Il. State Productivity Index Legend	Corn Bu/A	Soybeans Bu/A	Crop productivity index for optimum management
230A	Rowe silty clay loam, 0 to 2 percent slopes	32.75	39.0%		148	49	111
147A	Clarence silty clay loam, 0 to 2 percent slopes	26.71	31.8%		140	49	107
235A	Bryce silty clay, 0 to 2 percent slopes	7.39	8.8%		162	54	121
295A	Mokena silt loam, 0 to 2 percent slopes	6.73	8.0%		172	54	126
91A	Swygert silty clay loam, 0 to 2 percent slopes	6.44	7.7%		158	52	118
**241D3	Chatsworth silty clay, 6 to 12 percent slopes, severely eroded	3.86	4.6%		**75	**27	**57
Weighted Average					146	49.1	109.9

Legal access to NE field is currently being secured.



RE Taxes

PIN	Acres	16 Tax Pd 17	Tax/Ac
01-12-300-015	93.13	\$1,102.68	\$11.84

Contact: Waibel Farmland Services, Inc.
 107 S. Lincoln
 P.O. Box 1188
 Mahomet, IL 61853

www.WaibelFarmlandServices.com
brian@WaibelFarmlandServices.com
 O: 217-590-0233 or C: 217-898-2757

Possession: Full possession available for 2018 crop year.
Agency: Waibel Farmland Services Inc. is agent for the seller.
Disclaimer: Information in this brochure is believed to be accurate, but is subject to verification by buyers or others relying on it. No liability for errors or omissions is assumed by the seller or their agents.