



FOR SALE: PERKINS FARM WEST 106

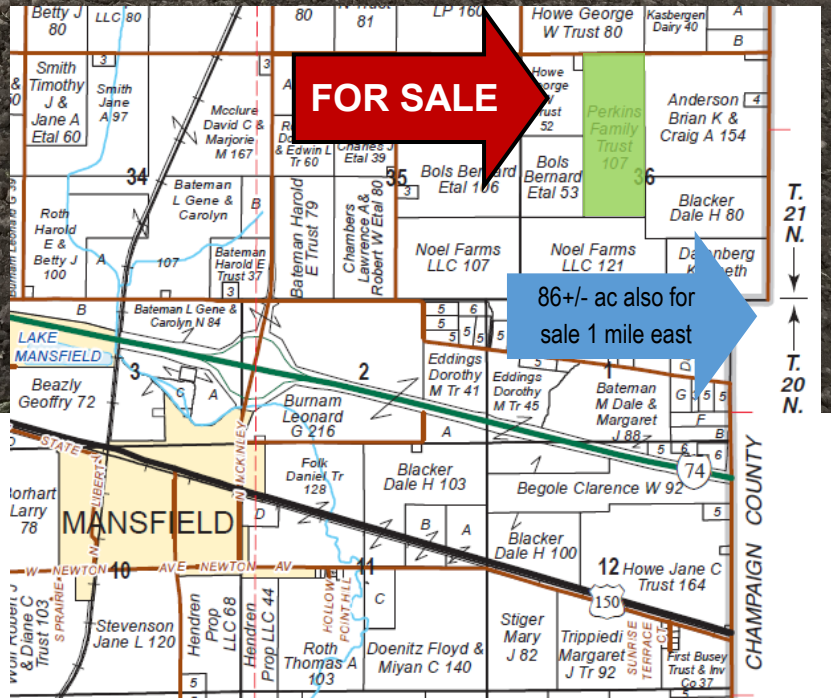
Legal Description:

E1/2 of NW1/4 and pt of
NE1/4 of SW1/4 of Section
36, T21N, R6E of the 3rd P.M.

106.67 Acres
\$9,400/Ac - \$1,002,698
3 mi. W of Mahomet
Piatt County, IL

USDA/FSA Info.:

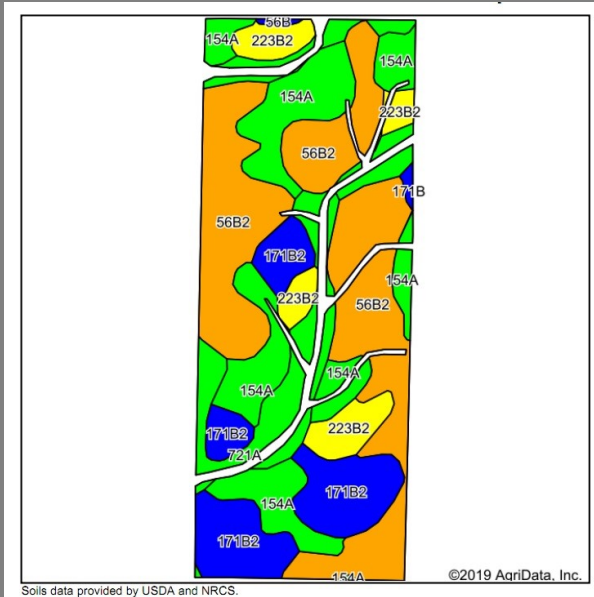
Farm: 3995
Tract: 3795
Tillable Acres: 105.83
Corn Base: 53.30 Ac
PLC Yield: 137
ARC-CO
Soybean Base: 52.50 Ac
PLC Yield: 46
ARC-CO
Wetlands: waterway



Soil Tests

	Test date	pH	P	K
North	8-2016	6.7	40.5	358.2
South	6-2015	6.4	75.6	373.6

Soil Map and Aerial Photo



Area Symbol: IL147, Soil Area Version: 14

Code	Soil Description	Acres	Percent of field	Il. State Productivity Index Legend	Corn Bu/A	Soybeans Bu/A	Crop productivity index for optimum management
**56B2	Dana silt loam, 2 to 5 percent slopes, eroded	39.01	39.4%	Orange	**171	**53	**124
154A	Flanagan silt loam, 0 to 2 percent slopes	24.39	24.6%	Green	194	63	144
**171B2	Catlin silt loam, 2 to 5 percent slopes, eroded	16.80	17.0%	Blue	**178	**56	**131
721A	Drummer and Elpaso silty clay loams, 0 to 2 percent slopes	10.70	10.8%	Light Green	194	63	143
**223B2	Varna silt loam, 2 to 4 percent slopes, eroded	7.68	7.7%	Yellow	**150	**48	**110
**171B	Catlin silt loam, 2 to 5 percent slopes	0.32	0.3%	Blue	**185	**58	**137
**56B	Dana silt loam, 2 to 5 percent slopes	0.21	0.2%	Blue	**178	**55	**130
Weighted Average					178.8	56.7	131.1

RE Taxes

PIN	Acres	18 Tax Pd 19	Tax/Ac
02-36-21-006-001-01	106.67	\$3,950.04	\$37.03

Contact: Waibel Farmland Services, Inc.
 107 S. Lincoln
 P.O. Box 1188
 Mahomet, IL 61853

www.WaibelFarmlandServices.com
brian@WaibelFarmlandServices.com
seth@WaibelFarmlandServices.com
 Office: 217-590-0233

Possession: Subject to existing crop share lease for 2019 crop year with Anderson Farms.

Agency: Waibel Farmland Services Inc. is agent for the seller.

Disclaimer: Information in this brochure is believed to be accurate, but is subject to verification by buyers or others relying on it. No liability for errors or omissions is assumed by the seller or their agents.