



# For Sale: Schuck Farm

**Price  
Reduced!**

**Legal Description:**

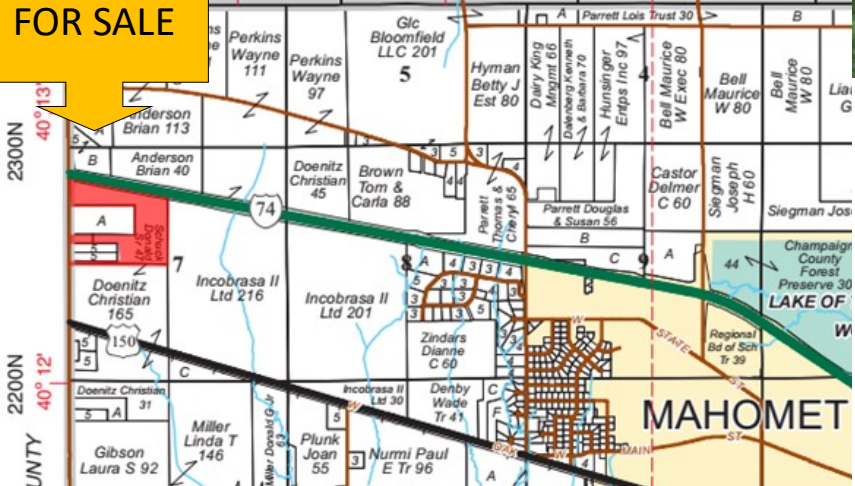
**Part of Section 7, Twp 20 N,  
Range 7 E of the 3rd P.M.**

**46.82 Acres**  
~~**\$7,900/Ac - \$369,878**~~  
**\$7,200/Ac - \$337,104**  
**Located between  
Mansfield & Mahomet  
Champaign County, IL**

**Soil PI - 141.5**

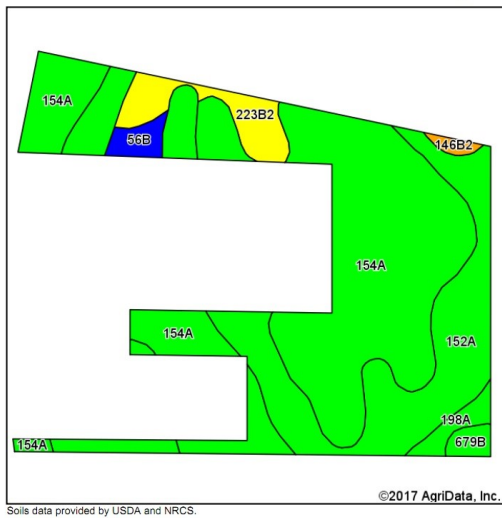
**USDA/FSA Info.:**  
Farm: 10221  
Tillable Acres: 48.47 ac  
Corn Base: 31.70 ac  
    PLC Yield: 126 bu/ac  
    ARC-CO  
Soybean Base: 13.70 ac  
    PLC Yield: 40 bu/ac  
    ARC-CO  
Wetlands: Determination  
    not complete  
CRP: 3.0 ac @ \$247.20/ac  
    thru 9-30-2020  
0.43 ac HEL (non-tillable)

**FOR SALE**



Map reproduced with permission of Rockford Map Publishers, Rockford, IL

# Soil Map and Aerial Photo



Area Symbol: IL019, Soil Area Version: 11

Code	Soil Description	Acres	Percent of field	Il. State Productivity Index Legend	Corn Bu/A	Soybeans Bu/A	Crop productivity index for optimum management
154A	Flanagan silt loam, 0 to 2 percent slopes	26.18	55.9%		194	63	144
152A	Drummer silty clay loam, 0 to 2 percent slopes	15.12	32.3%		195	63	144
**223B2	Varna silt loam, 2 to 4 percent slopes, eroded	2.77	5.9%		**150	**48	**110
198A	Elburn silt loam, 0 to 2 percent slopes	0.92	2.0%		197	61	143
**56B	Dana silt loam, 2 to 5 percent slopes	0.87	1.9%		**178	**55	**130
**679B	Blackberry silt loam, 2 to 5 percent slopes	0.62	1.3%		**192	**59	**141
**146B2	Elliott silty clay loam, 2 to 4 percent slopes, eroded	0.32	0.7%		**160	**52	**119
<b>Weighted Average</b>					<b>191.2</b>	<b>61.8</b>	<b>141.5</b>



## RE Taxes

PIN	Acres	16 Tax Pd 17	Tax/Ac
15-13-07-100-014	46.82	\$1,376.02	\$29.39

**Possession:** Full possession available for 2018 crop year.  
**Agency:** Waibel Farmland Services Inc. is agent for the seller.  
**Disclaimer:** Information in this brochure is believed to be accurate, but is subject to verification by buyers or others relying on it. No liability for errors or omissions is assumed by the seller or their agents.

**Contact: Waibel Farmland Services, Inc.**  
 107 S. Lincoln St.  
 P.O. Box 1188  
 Mahomet, IL 61853

[www.WaibelFarmlandServices.com](http://www.WaibelFarmlandServices.com)  
[brian@WaibelFarmlandServices.com](mailto:brian@WaibelFarmlandServices.com)  
 O: 217-590-0233 or C: 217-898-2757