



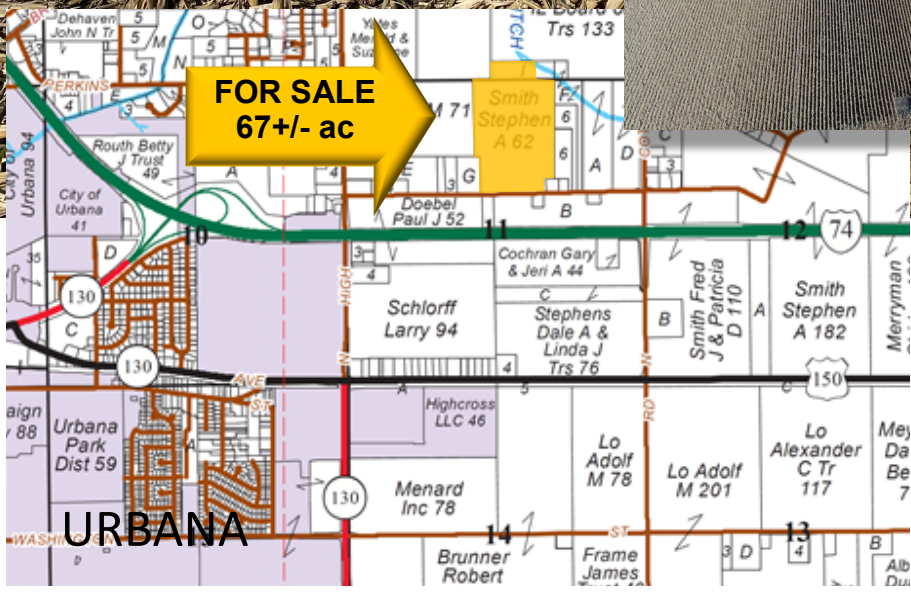
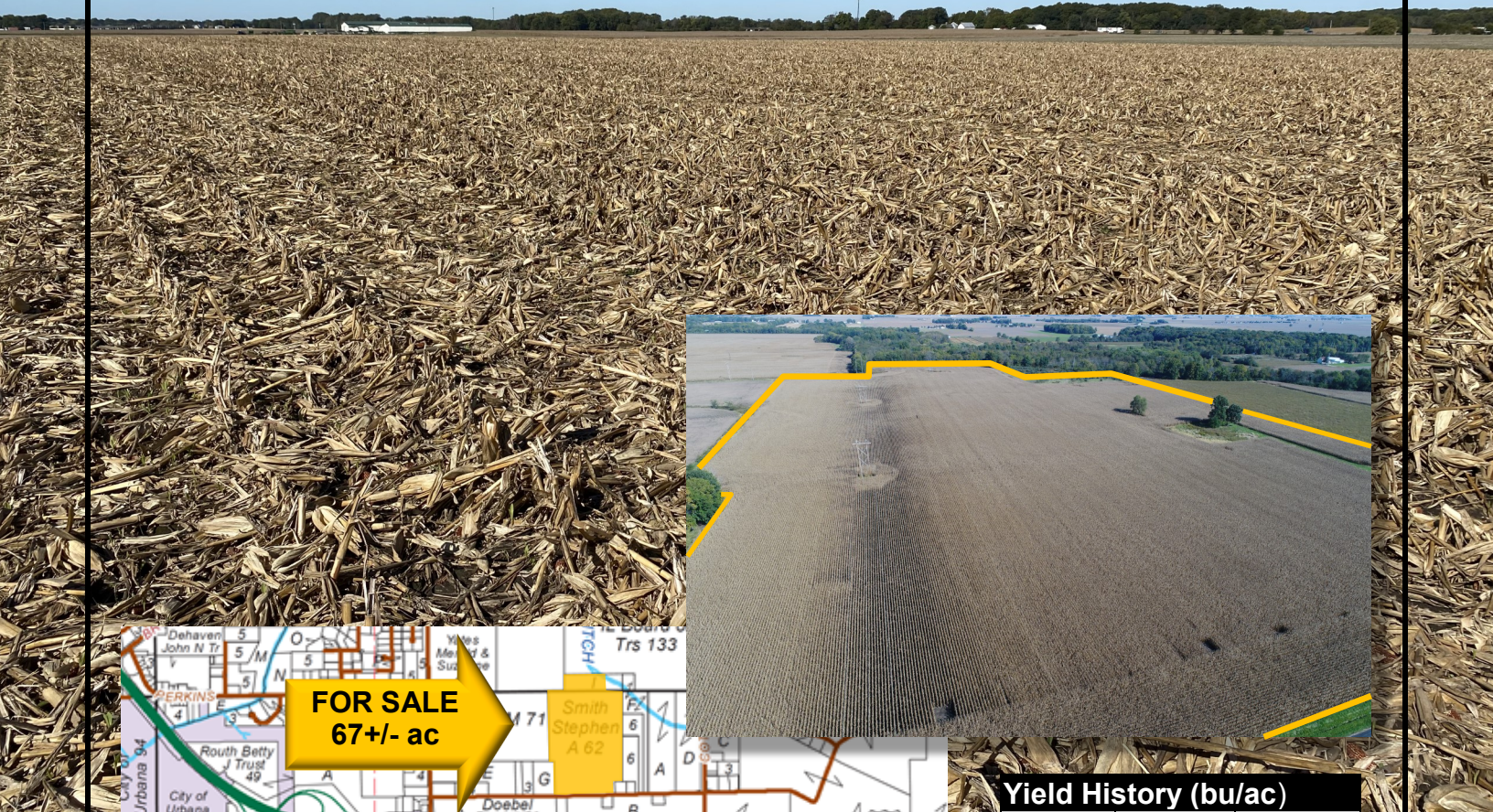
FOR SALE: SMITH FARM

Legal Description:

Pt of North 1/2 Section 11, and
South 1/2 Section 2
Urbana Twp, Champaign Cty, IL

Survey in progress and to be sold
subject to surveyed acres.

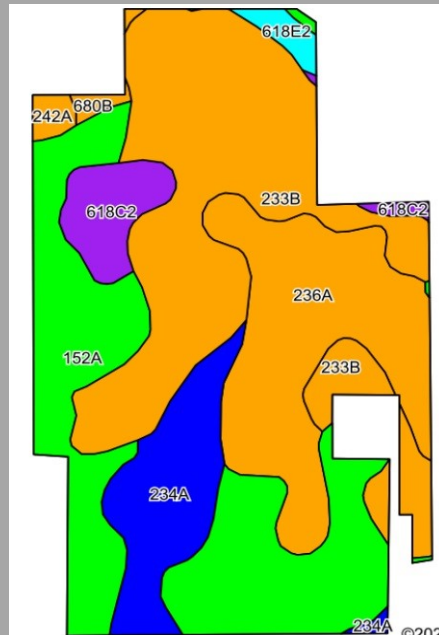
67 +/- Acres
\$10,900/Ac - \$730,300
1.5 mi. East of Urbana
Champaign County, IL



Yield History (bu/ac)

Year	Corn	Beans
2021	189.0	
2020	178.0	
2019		40.0
2018	211.0	
2017		49.0
2016	183.0	
2015		65.0
2014	221.0	

Soil Map and Aerial Photo



Code	Soil Description	Acres	% of Field	Legend	Corn Bu/A	Soybeans Bu/A	Opt Mgt PI
233B	Birkbeck silt loam, 2 to 5 percent slopes	20.02	33.1%		165	51	121
152A	Drummer silty clay loam, 0 to 2 percent slopes	17.49	28.9%		195	63	144
236A	Sabina silt loam, 0 to 2 percent slopes	12.24	20.2%		168	52	122
234A	Sunbury silt loam 0 to 2 percent slopes	6.15	10.2%		179	57	131
618C2	Senachwine silt loam, 5 to 10 percent slopes, eroded	2.93	4.8%		136	44	100
618E2	Senachwine silt loam, 18 to 25 percent slopes, eroded	0.71	1.2%		110	35	80
242A	Kendall silt loam, 0 to 2 percent slopes	0.51	0.8%		172	53	125
680B	Campton silt loam, 2 to 5 percent slopes	0.38	0.6%		162	50	118
3107A	Sawmill silty clay loam, 0 to 2 percent slopes, frequently flooded	0.09	0.1%		189	60	139
Weighted Average:					173.7	54.8	127.4

RE Taxes

PIN	Acres	20 Tax Pd 21	Tax/Ac
30-21-02-400-004	8.28	\$96.36	\$11.64
30-21-11-200-008	62.50	\$1,913.48	\$30.62

Soil Tests

Test date	pH	P	K
4-27-2021	6.0	65.7	365

USDA/FSA Info:

Farm: 9986
 Tillable Acres: 60.52
 Corn Base: 29.9 Ac
 PLC Yield: 139
 Soybean Base: 29.9 Ac
 PLC Yield: 45
 Wetlands: Saline ditch

Possession: Full possession available for 2022 crop year.
Agency: Waibel Farmland Services Inc. is agent for the seller.
Disclaimer: Information in this brochure is believed to be accurate, but is subject to verification by buyers or others relying on it. No liability for errors or omissions is assumed by the seller or their agents.

www.waibelfarmlandservices.com

brian@waibelfarmlandservices.com | seth@waibelfarmlandservices.com
 217-590-0233 | 107 S. Lincoln St. | P.O. Box 1188 | Mahomet, IL 61853