



# FOR SALE: TRIPPIEDI FARM

## Legal Description:

Part of Sect 12 T20N,  
R6E of 3rd PM

**92.24 Acres**  
**\$10,900/Ac—\$1,005,416**  
**2 mi ESE of Mansfield**  
**2 mi West of Mahomet**  
**Blue Ridge Twp—Piatt County, IL**

### Yield History

Year	Corn	Soybeans
2016	205.2	61.2
2015	159.2	54.2
2014	240.0	

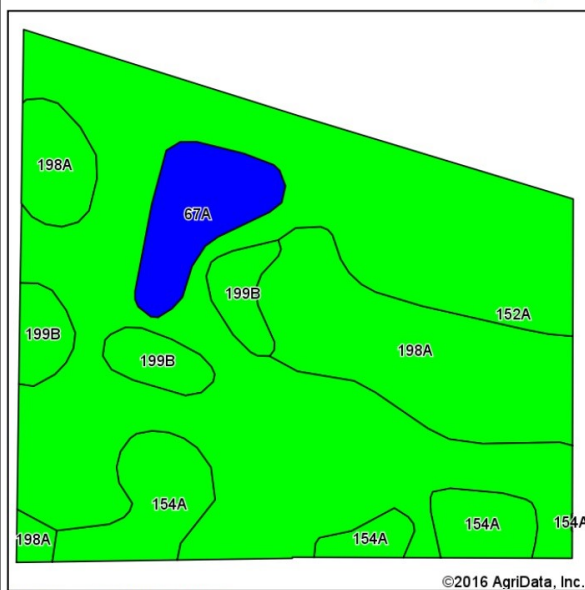


### USDA/FSA Info.:

Farm: 5834  
 Tillable Acres: 92.41  
 Corn Base: 45.50 Ac  
 PLC Yield: 148  
 ARC-CO  
 Soybean Base: 45.50 Ac  
 PLC Yield: 49  
 ARC-CO



# Soil Map and Aerial Photo



Area Symbol: IL147, Soil Area Version: 11

Code	Soil Description	Acres	Percent of field	Il. State Productivity Index Legend	Corn Bu/A	Soybeans Bu/A	Crop productivity index for optimum management
152A	Drummer silty clay loam, 0 to 2 percent slopes	56.67	60.9%		195	63	144
198A	Elburn silt loam, 0 to 2 percent slopes	17.41	18.7%		197	61	143
154A	Flanagan silt loam, 0 to 2 percent slopes	8.26	8.9%		194	63	144
**199B	Plano silt loam, 2 to 5 percent slopes	5.43	5.8%		**192	**59	**141
67A	Harpster silty clay loam, 0 to 2 percent slopes	5.26	5.7%		182	57	133
<b>Weighted Average</b>					<b>194.4</b>	<b>62.1</b>	<b>143</b>

## RE Taxes

PIN	Acres	15 Tax Pd 16
02-12-20-006-010-00	50.33	\$2,392.62
02-12-20-006-014-00	41.91	\$2,139.14
<b>Total</b>	<b>92.24</b>	<b>\$4,531.76</b>

### Contact:

**Waibel Farmland Services, Inc.**

303 E. Main St. Unit C

P.O. Box 1188

Mahomet, IL 61853

[www.WaibelFarmlandServices.com](http://www.WaibelFarmlandServices.com)

[brian@WaibelFarmlandServices.com](mailto:brian@WaibelFarmlandServices.com)

O: 217-590-0233 or C: 217-898-2757

**Possession:** Full possession available for 2017 crop year. Buyer to reimburse seller for fall 2016 tillage.

**Agency:** Waibel Farmland Services Inc. is agent for the seller.

**Disclaimer:** Information in this brochure is believed to be accurate, but is subject to verification by buyers or others relying on it. No liability for errors or omissions is assumed by the seller or their agents.