



# FOR SALE: JARBOE FARM

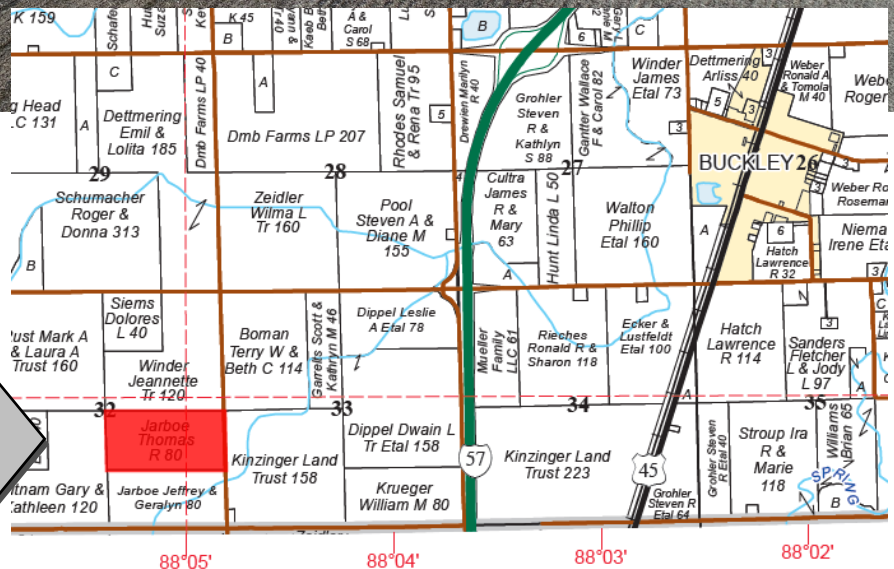
N 1/2 of SE 1/4 of Section  
32, T25N, R10E of 3rd P.M.

**80.0+/- Acres**  
**\$11,900/Ac**  
2 mi SW of Buckley  
Iroquois County, IL



**USDA/FSA Info.:**  
Farm: 11697  
Tillable Acres: 76.62 Ac  
Corn Base: 38.30 Ac  
PLC Yield: 138  
Soybean Base: 37.80 Ac  
PLC Yield: 38  
HEL: DNC  
Wetlands: DNC

**OPEN LEASE FOR  
2024 CROP YEAR!**

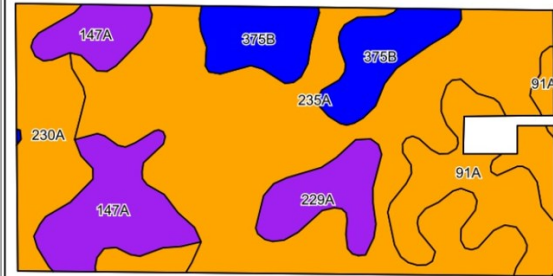


[www.waibelfarmlandservices.com](http://www.waibelfarmlandservices.com)

brian@waibelfarmlandservices.com | seth@waibelfarmlandservices.com | brennen@waibelfarmlandservices.com  
217-590-0233 | 107 S. Lincoln St. | P.O. Box 1188 | Mahomet, IL 61853

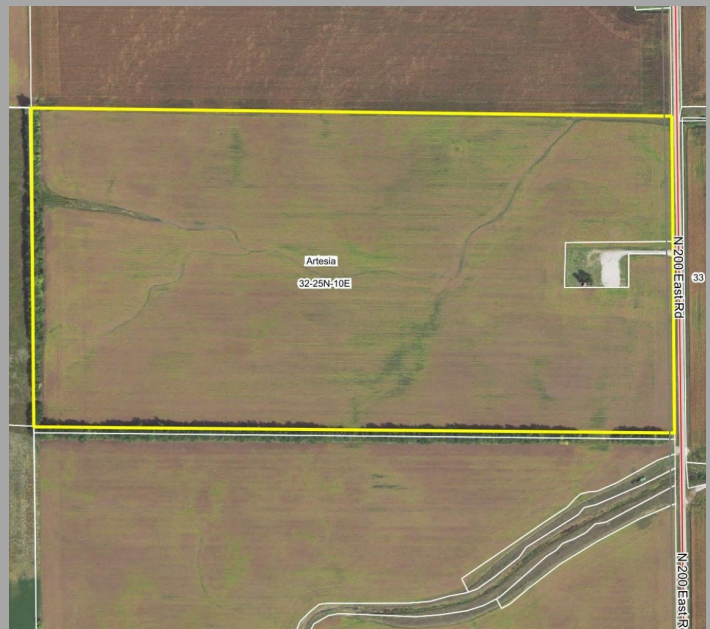


# SOIL MAP AND AERIAL PHOTO



Soils data provided by USDA and NRCS.

©2024 AgriData, Inc.



Code	Soil Description	Acres	% of Field	Legend	Corn Bu/A	Soybeans Bu/A	Opt Mgt PI
235A	Bryce silty clay, 0 to 2 percent slopes	38.25	49.7%		161	54	120
147A	Clarence silty clay loam, 0 to 2 percent slopes	9.70	12.6%		140	49	107
375B	Rutland silty clay loam, 2 to 5 percent slopes	8.31	10.8%		176	56	131
230A	Rowe silty clay loam, 0 to 2 percent slopes	8.22	10.7%		148	49	118
91A	Swygert silty clay loam, 0 to 2 percent slopes	8.17	10.6%		158	52	118
229A	Monee silty clay loam, 0 to 2 percent slopes	4.28	5.6%		132	44	98
<b>Weighted Average:</b>					<b>157.5</b>	<b>52.5</b>	<b>117.9</b>

## Soil Test

Test Date	pH	P	K
5/2020	7.0	36.7	394.2

## RE Taxes

PIN	Acres	22 Tax Pd 23	Tax/Ac
29-32-400-002	80.00	\$2,514.90	\$31.44

**Possession:** Full possession available for 2024 crop year, including early field access for spring operations upon contract signing.

**Agency:** Waibel Farmland Services Inc. is agent for the seller.

**Disclaimer:** Information in this brochure is believed to be accurate, but is subject to verification by buyers or others relying on it. No liability for errors or omissions is assumed by the seller or their agents.

[www.waibelfarmlandservices.com](http://www.waibelfarmlandservices.com)

brian@waibelfarmlandservices.com | seth@waibelfarmlandservices.com | brennen@waibelfarmlandservices.com  
217-590-0233 | 107 S. Lincoln St. | P.O. Box 1188 | Mahomet, IL 61853