



**Sun Ag, Inc**

# Sample Management Report

**Location:** Sun Ag El Paso

**Customer:** Neisler Farms

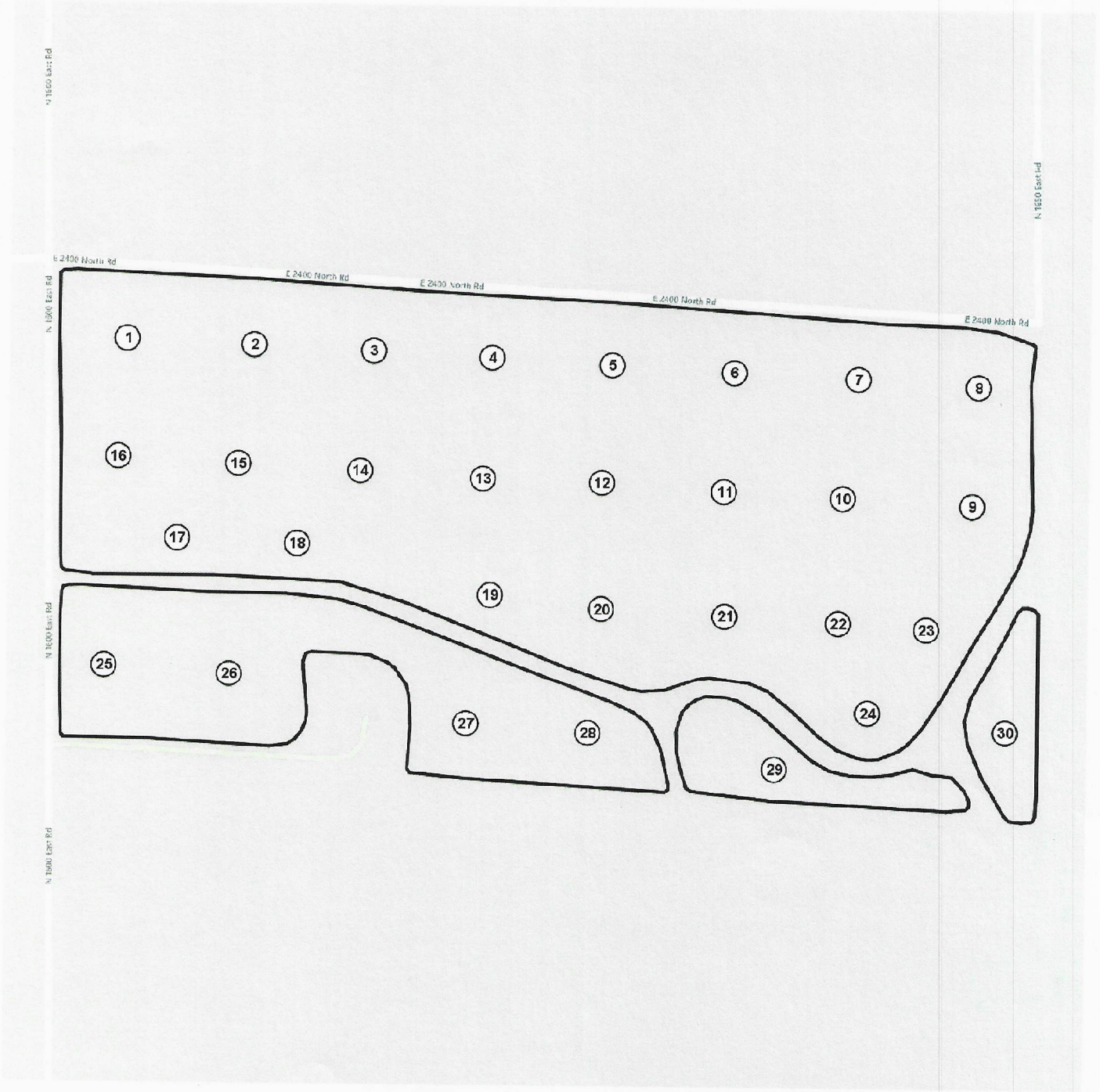
**Dates:** 2020-06-04

**Farm:** All

**Field:** Sutton Hudson

**Acres:** 72.22

*Hudson*





**Sun Ag, Inc**

# Soil Test Results

**Location:** Sun Ag El Paso

**Farm:** All

**Customer:** [Faded]

**Field:** Sutton Hudson

**Dates:** 2020-06-04

**Acres:**

**Sub-Field:**

ID	pH	bpH	P (lb/ac)	K (lb/ac)	CEC	om	Ca (lb/ac)	Mg (lb/ac)	PerCa	PerMg	PerK	PerH
1	6.2	6.8	87	307	28.0	3.5	7626	966	68.2	14.4	1.4	16.0
2	6.6	7.0	96	286	23.2	3.1	6760	970	73.0	17.4	1.6	8.0
3	6.3	7.0	64	282	22.2	3.0	5982	900	67.5	16.9	1.6	14.0
4	6.1	6.9	74	235	20.9	3.0	5428	773	65.1	15.4	1.4	18.0
5	6.1	6.9	80	222	16.5	3.0	4594	421	69.6	10.6	1.7	18.0
6	6.0	6.8	62	351	24.0	2.9	6152	815	64.0	14.1	1.9	20.0
7	6.2	7.0	60	298	20.3	3.0	5468	720	67.3	14.8	1.9	16.0
8	6.4	7.0	54	322	19.6	2.3	5484	756	69.8	16.1	2.1	12.0
9	6.3	7.0	23	245	16.9	2.3	4598	650	68.1	16.0	1.9	14.0
10	6.1	6.8	41	244	20.5	3.2	5556	622	67.8	12.7	1.5	18.0
11	6.3	7.0	53	241	16.5	3.2	4794	459	72.5	11.6	1.9	14.0
12	5.8	6.5	59	234	18.7	3.2	4690	516	62.9	11.5	1.6	24.0
13	6.2	7.0	70	250	18.0	3.0	4966	572	69.0	13.2	1.8	16.0
14	6.3	7.0	90	285	17.8	3.0	4748	734	66.8	17.2	2.0	14.0
15	6.2	7.0	87	301	18.6	3.0	4766	803	64.0	18.0	2.1	16.0
16	6.1	6.7	107	273	23.1	3.5	6290	695	68.0	12.5	1.5	18.0
17	6.4	7.0	132	340	25.3	3.5	7598	683	75.0	11.2	1.7	12.0
18	6.4	7.0	96	351	18.6	3.1	5270	655	70.9	14.7	2.4	12.0
19	6.8	7.0	93	332	17.7	3.0	5244	839	73.9	19.7	2.4	4.0
20	6.0	7.0	41	308	18.4	2.1	4566	695	62.1	15.8	2.1	20.0
21	6.2	7.0	66	298	16.2	3.0	4298	600	66.2	15.4	2.4	16.0
22	5.8	6.6	126	333	16.2	2.9	4014	447	61.9	11.5	2.6	24.0
23	5.5	6.3	60	252	16.2	2.8	3830	351	59.0	9.0	2.0	30.0
24	5.8	6.6	49	266	16.3	2.8	4012	479	61.6	12.3	2.1	24.0
25	6.1	6.7	74	241	20.9	3.7	5524	731	66.0	14.6	1.5	18.0
26	5.7	6.5	78	395	14.8	3.0	3712	271	62.9	7.7	3.4	26.0
27	6.1	7.0	53	658	15.1	2.3	3720	539	61.5	14.9	5.6	18.0
28	6.8	7.0	45	271	14.4	2.4	4308	649	74.8	18.8	2.4	4.0
29	5.8	6.6	138	327	15.6	3.0	4006	332	64.4	8.9	2.7	24.0
30	5.7	6.5	120	415	16.9	3.0	3910	527	57.9	13.0	3.1	26.0
<b>Avg.</b>	<b>6.1</b>	<b>6.8</b>	<b>76</b>	<b>305</b>	<b>18.9</b>	<b>3.0</b>	<b>5064</b>	<b>639</b>	<b>66.7</b>	<b>14.0</b>	<b>2.1</b>	<b>17.1</b>