



FOR SALE: STIGER FARM

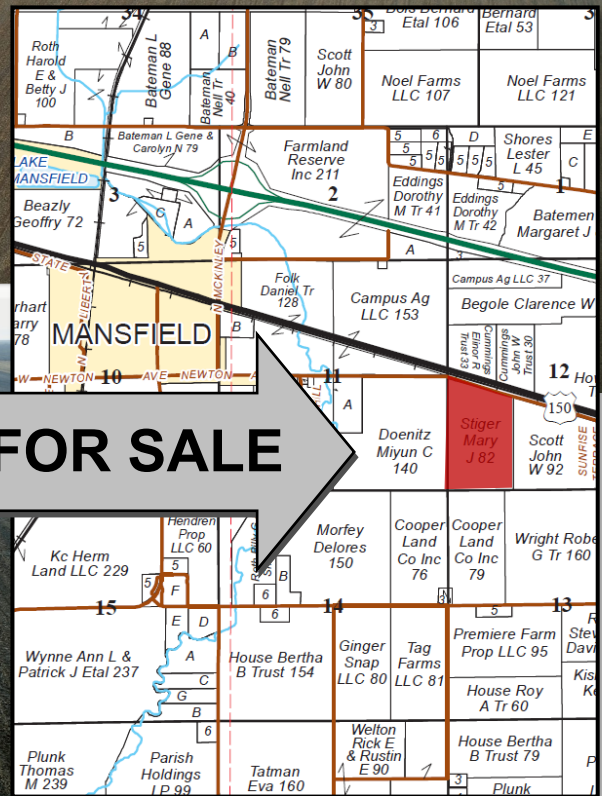
82.25 Acres
\$19,200/Ac
 1 mile E of Mansfield
 Piatt County, IL

Part of Section 12,
 T20N, R6E of the
 Third P.M.

**OPEN LEASE FOR
 2024 CROP YEAR!**

**143.5 soil PI
 All tillable!**

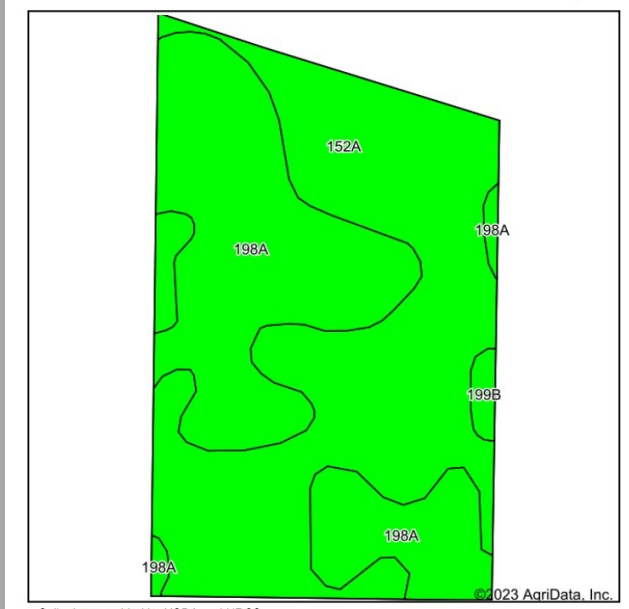
FOR SALE



www.waibelfarmlandservices.com

brian@waibelfarmlandservices.com | seth@waibelfarmlandservices.com
 217-590-0233 | 107 S. Lincoln St. | P.O. Box 1188 | Mahomet, IL 61853

SOIL MAP AND AERIAL PHOTO



Code	Soil Description	Acres	% of Field	Legend	Corn Bu/A	Soybeans Bu/A	Opt Mgt PI
152A	Drummer silty clay loam, 0 to 2 percent slopes	46.36	56.0%		195	63	144
198A	Elburn silt loam, 0 to 2 percent slopes	35.51	42.9%		197	61	143
199B	Plano silt loam, 2 to 5 percent slopes	0.91	1.1%		192	59	141
Weighted Average:					195.8	62.1	143.5

USDA/FSA Info.:

Farm: 4423
 Tillable Acres: 82.78 Ac
 Corn Base: 42.10 Ac
 PLC Yield: 182
 Soybean Base: 40.10 Ac
 PLC Yield: 58
 HEL: NHEL
 Wetlands: no determination

Soil Test

Field	Test Date	pH	P	K
Stiger	05-27-2022	6.3	95	392
128 T lime applied fall 2022				

Yield History (bu/ac)

Year	Corn	Beans
2023		81
2022	230	
2021		82
2020		62
2019	210	
2018		78
2017		76
2016	219	
2015		78
2014	238	
yields based on 81.5 ac		

RE Taxes

PIN	Acres	22 Tax Pd 23	Tax/Ac
02-12-20-006-011-00	82.25	\$5,460.20	\$66.39

Possession: Full possession available for 2024 crop year.
Reimbursements: Fertilizer applied fall 2023 to be reimbursed by buyer.
Agency: Waibel Farmland Services Inc. is agent for the seller.
Disclaimer: Information in this brochure is believed to be accurate, but is subject to verification by buyers or others relying on it. No liability for errors or omissions is assumed by the seller or their agents.

www.waibelfarmlandservices.com

brian@waibelfarmlandservices.com | seth@waibelfarmlandservices.com
 217-590-0233 | 107 S. Lincoln St. | P.O. Box 1188 | Mahomet, IL 61853